



General Certificate of Secondary Education
2017–2018

Centre Number

--	--	--	--	--

Candidate Number

--	--	--	--

Science: Single Award

Unit 1 (Biology)

Higher Tier



[GSS12]

GSS12

TUESDAY 15 MAY 2018, AFTERNOON

TIME

1 hour 15 minutes.

INSTRUCTIONS TO CANDIDATES

Write your Centre Number and Candidate Number in the spaces provided at the top of this page.

You must answer the questions in the spaces provided.

Do not write outside the boxed area on each page or on blank pages.

Complete in black ink only. **Do not write with a gel pen.**

Answer **all ten** questions.

INFORMATION FOR CANDIDATES

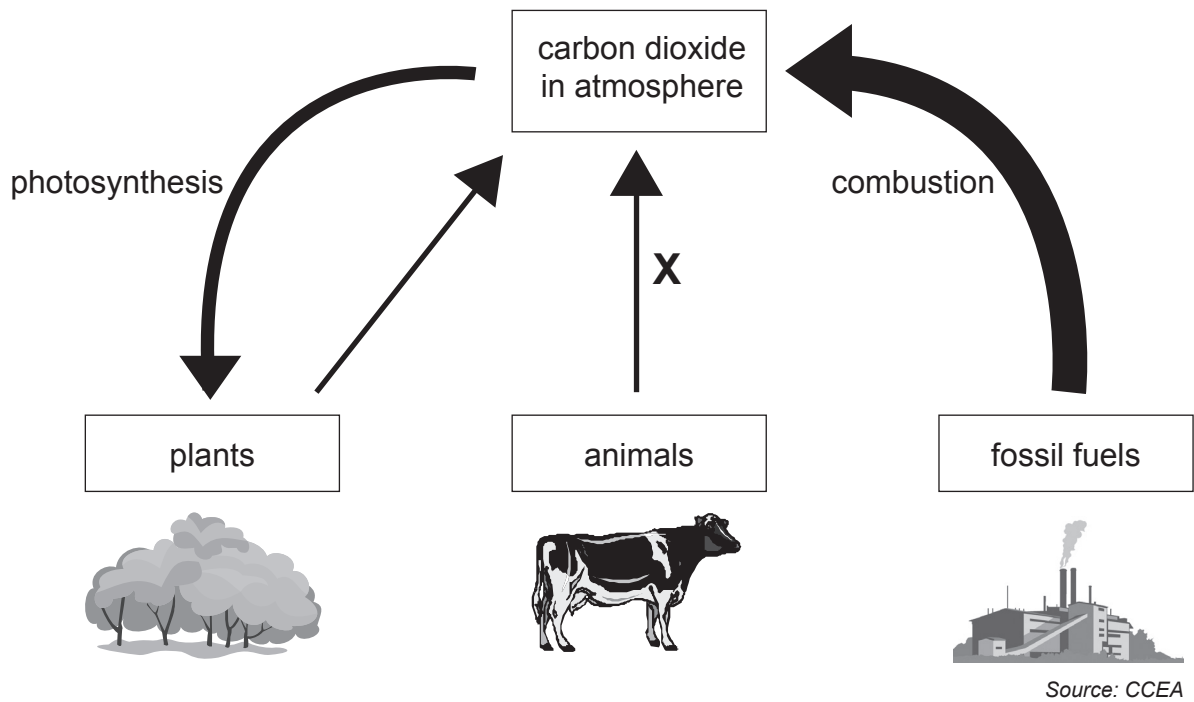
The total mark for this paper is 75.

Figures in brackets printed down the right-hand side of pages indicate the marks awarded to each question or part question.

Quality of written communication will be assessed in Questions **4** and **10**.



- 1 The diagram below shows how carbon dioxide enters and leaves the atmosphere. The arrows show the movement of carbon dioxide. The thicker the arrow the more carbon dioxide.



- (a) Name the process labelled X on the diagram.

[1]

- (b) Using the diagram, explain why the amount of carbon dioxide in the atmosphere is increasing.

[2]



(c) The increasing amount of carbon dioxide in the atmosphere is leading to global warming.

(i) Explain what is meant by the term **global warming**.

[1]

(ii) Give **one** effect of global warming.

[1]

(d) When the Earth was first formed approximately 4.5 billion years ago, its atmosphere contained more carbon dioxide and less oxygen than today.

However when green plants evolved the composition of the atmosphere began to change.

(i) What process takes place in green plants that helped change the amount of carbon dioxide and oxygen in the atmosphere and promoted the evolution of animals?

[1]

(ii) In what way have the levels of carbon dioxide and oxygen in the atmosphere changed from the time green plants first evolved?

[2]

[Turn over

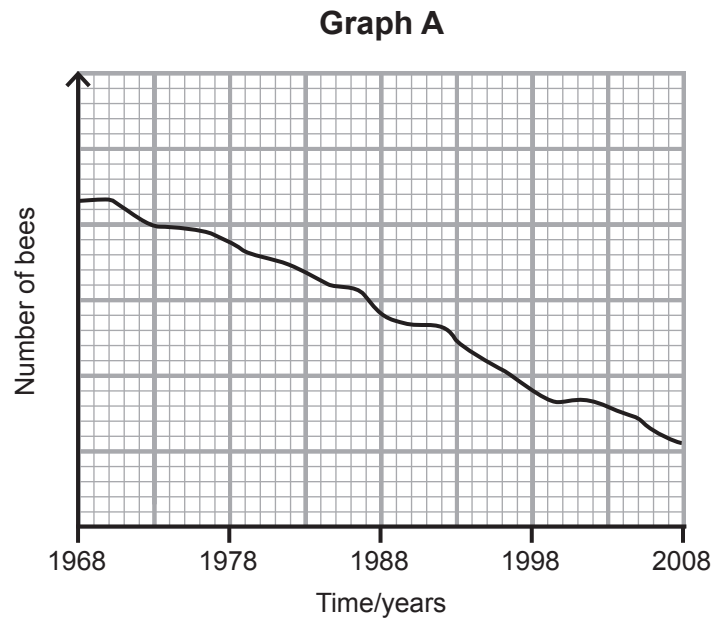


2 Bees are important in the life cycle of plants. When a bee lands on a flower to feed on nectar, the pollen will stick to its body and the bee can carry the pollen to another flower. The pollen helps plants to produce seeds which will grow into new plants. This ensures good biodiversity.

(a) What is meant by the term **biodiversity**?

[1]

Graph A shows how the number of bees in Ireland has changed over a 40-year period.



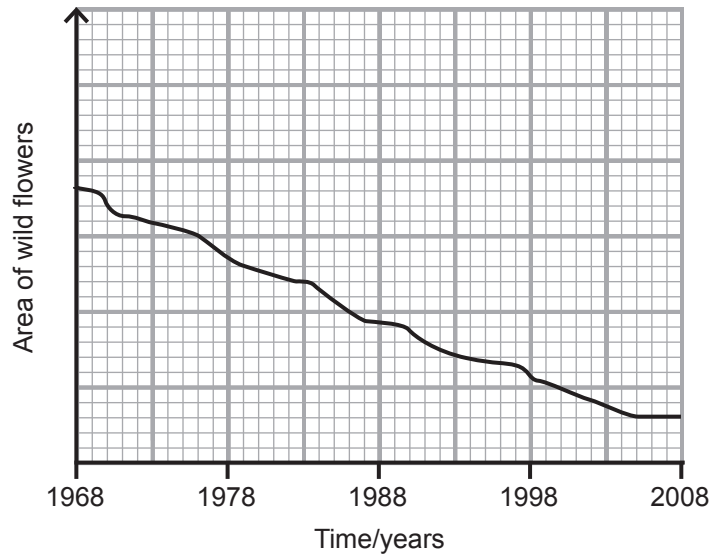
(b) Describe the trend shown in this graph.

[1]



Graph **B** shows the area of wild flowers in Ireland over the same period.

Graph B



(c) Use information from the graphs (**A** and **B**) to explain fully the trend in the number of bees in Ireland.

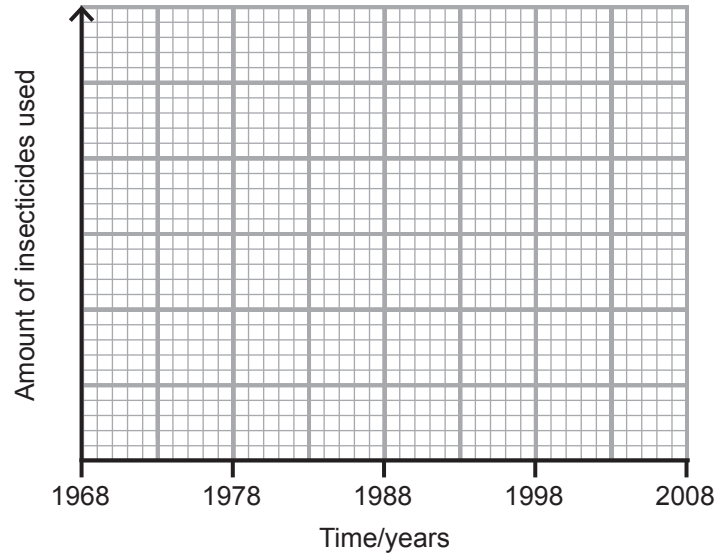
[2]

[Turn over



(d) Another reason for the trend shown in Graph A is the use of insecticides on plants. Insecticides will kill bees.

Use this information to draw a line on the grid below to show how the amount of insecticide used may have changed during the same 40-year period. [1]



(e) Suggest **two** actions that could help increase the number of bees.

1. _____

2. _____

_____ [2]



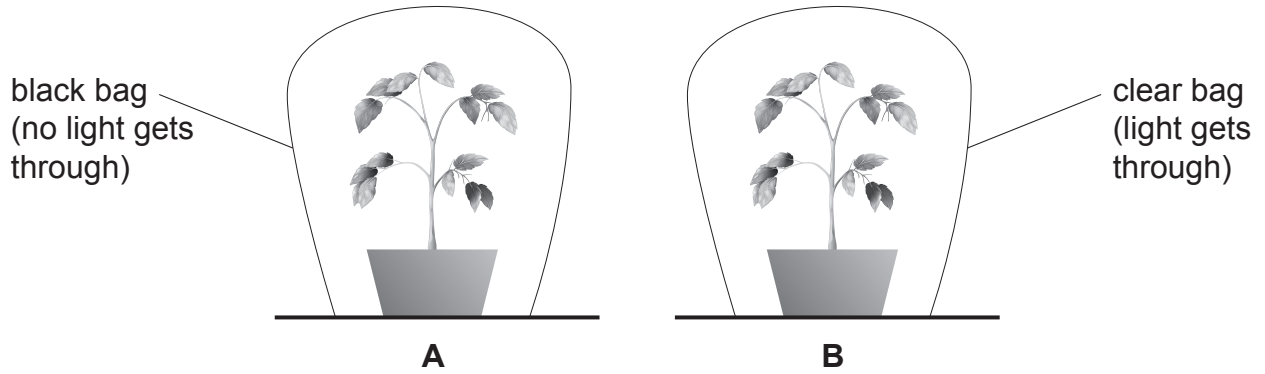


BLANK PAGE
DO NOT WRITE ON THIS PAGE
(Questions continue overleaf)



3 Photosynthesis is the process by which green plants use sunlight to make food which is stored as starch.

(a) The diagram below shows how an experiment to investigate if light is needed for photosynthesis could be set up.



Source: CCEA

Before the investigation was set up, both plant **A** and plant **B** were de-starched.

(i) Describe how the plants could have been de-starched.

[1]

(ii) What does de-starching do to the plants in this experiment?

[1]

(iii) Give **two** factors needed to make the investigation a fair test.

1. _____

2. _____ [2]



- (b) One leaf was taken from plant **A** and another from plant **B**. Both leaves were tested for the presence of starch using iodine.

Describe and explain the results you would expect for leaf **B**.

[2]

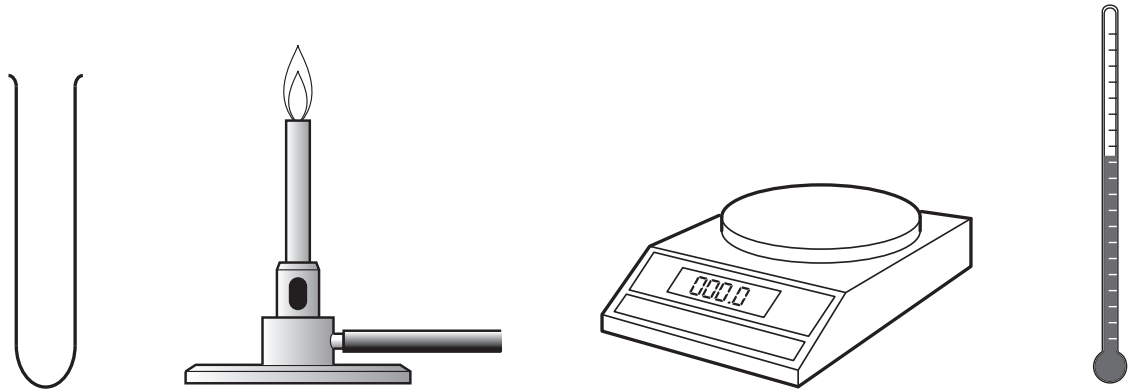
[Turn over



4 Mary wants to find out whether pasta or potato has more energy.

Describe an experiment to compare the amount of energy in these foods.

Some of the equipment Mary could use is shown below.



Source: CCEA

In this question you will be assessed on your written communication skills including the use of specialist scientific terms.





[6]

[Turn over

11652



24GSS1211

5 Shown below is a Manx cat. Some Manx cats have no tail.



© Aletakae / iStock / Thinkstock

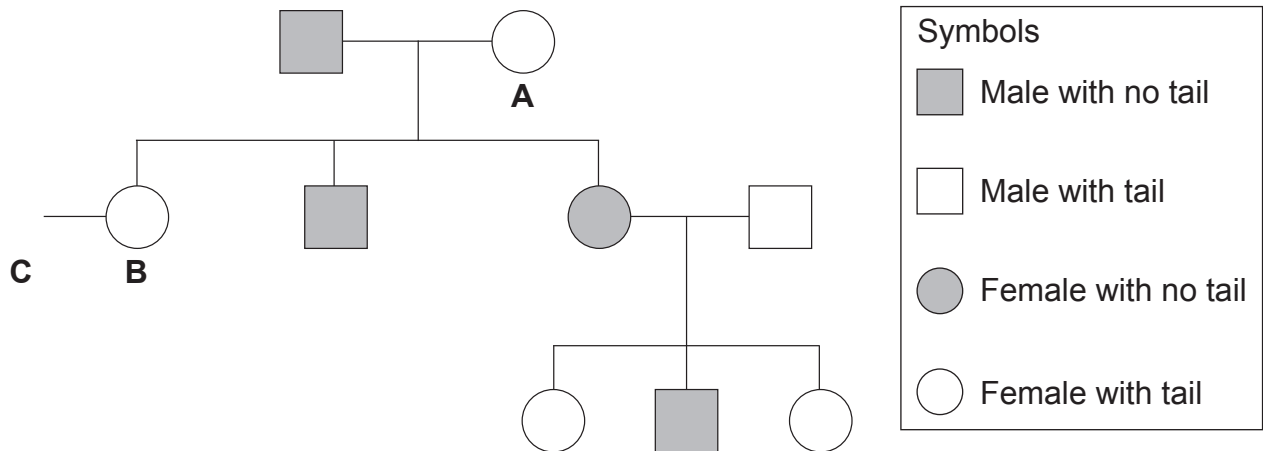
The allele for no tail (T) is dominant to the allele for having a tail (t).

Manx cats with no tail have the genotype Tt.

Kittens with the genotype TT die in the uterus so there cannot be an adult cat with the genotype TT.

The following pedigree diagram shows inheritance of the tail/no tail trait in a family of cats.

The symbol for cat **C** is not shown.



(a) What relation is cat **A** to cat **B**?

_____ [1]



(b) A cat breeder wants only cats with tails so breeds cat **B** with cat **C**.

In the space below, draw the symbol that must be used to represent cat **C**.

[1]

(c) Complete the Punnett square below showing the cross between cat **B** and cat **C**.

[2]

[Turn over



6 Every year over 41 000 people are diagnosed with bowel cancer in the UK.
A healthy diet and regular exercise are important in helping to prevent this disease.

(a) Name the food **type** that helps prevent bowel cancer.

[1]

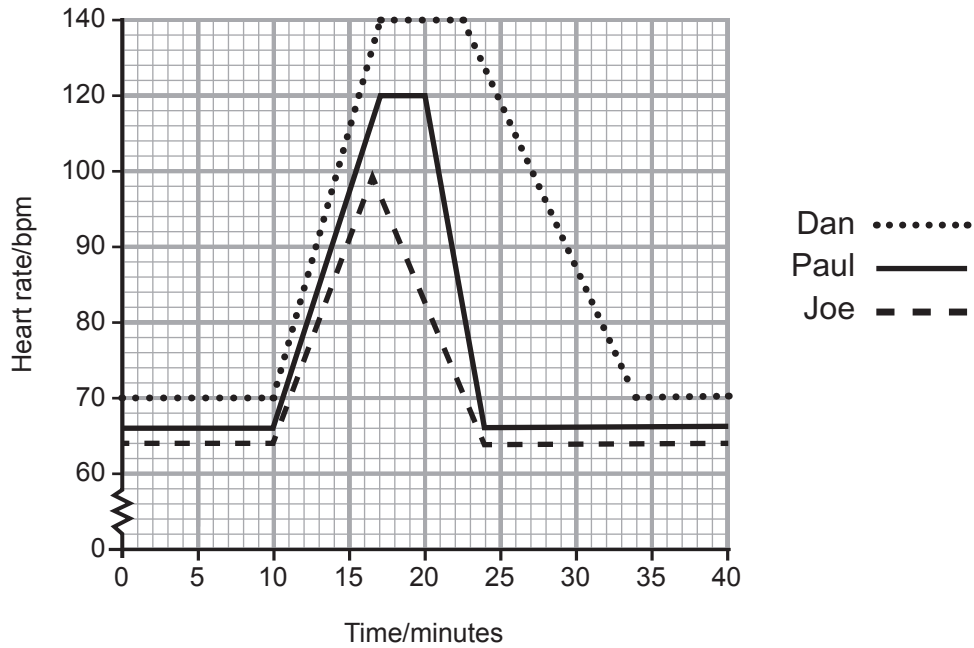
(b) The heart also benefits from regular exercise.

Describe and explain how exercise benefits the heart.

[3]



(c) The graph below shows the heart rates for three boys before, during and after exercise.



(i) Calculate the maximum percentage increase in Dan's heart rate.
(Show your working out.)

Answer _____ % [2]

(ii) Suggest what time exercise stopped.

Answer _____ minutes [1]

(iii) Using the graph, name the boy who is fittest. Give **one** piece of evidence to support your choice.

Name _____

Evidence _____

_____ [2]

[Turn over



7 The hormone system helps our body respond to the world around us.

(a) Explain what is meant by the term hormone.

[2]

(b) Insulin is an example of a hormone. Describe fully the role of insulin in the body.

[3]



- (c) People who do not produce insulin suffer from Type 1 diabetes. The table below shows suggested blood glucose levels for people with Type 1 diabetes and those without diabetes.

	Blood glucose levels m mol/L	
	Before meal	90 mins after meal
Without diabetes	4.0 to 5.9	Under 7.8
With Type 1 diabetes	4.0 to 7.0	5.0 to 9.0

Tania and Jenna both have Type 1 diabetes and are concerned about their blood glucose levels.

- (i) Tania and Jenna checked their blood glucose levels before eating lunch. Tania's was 4.0 and Jenna's was 4.1. Suggest in what way, if any, these readings changed immediately after eating lunch.

_____ [1]

- (ii) Ninety minutes after eating lunch, Jenna's blood glucose level was 15.0 and Tania's was 6.2. Suggest why the readings were so different.

_____ [2]

[Turn over



8 Farmers add fertilisers rich in nitrates to their land to increase the crop yield. In 1991 the Nitrate Directive was introduced to try to reduce water pollution caused by nitrates.

(a) Suggest **two** ways a farmer can reduce the risk of nitrates entering water.

1. _____
2. _____ [2]

Once nitrates enter a lake there is an increase in the growth of water plants. Eventually, due to competition for light and space, many of these plants will die.

(b) With reference to the nitrogen cycle, describe and explain what effect, if any, this has on animals in the lake.

_____ [3]





BLANK PAGE
DO NOT WRITE ON THIS PAGE
(Questions continue overleaf)



(c) Pollution levels in rivers are classified into three groups: unpolluted, moderately polluted or seriously polluted.

Some rivers in the South-East region of Ireland were sampled to test water pollution levels.

The table below shows the percentage (%) of water samples from rivers in each of the three groups over a period of thirty years.

Year	Unpolluted/%	Moderately polluted/%	Seriously polluted/%
1980	77.0	11.2	11.8
1985	77.5	15.0	7.5
1990	72.0	17.8	10.2
1995	69.0	22.7	8.3
2000	68.0	23.2	8.8
2005	72.0	21.5	6.5
2010	68.5	25.1	6.4

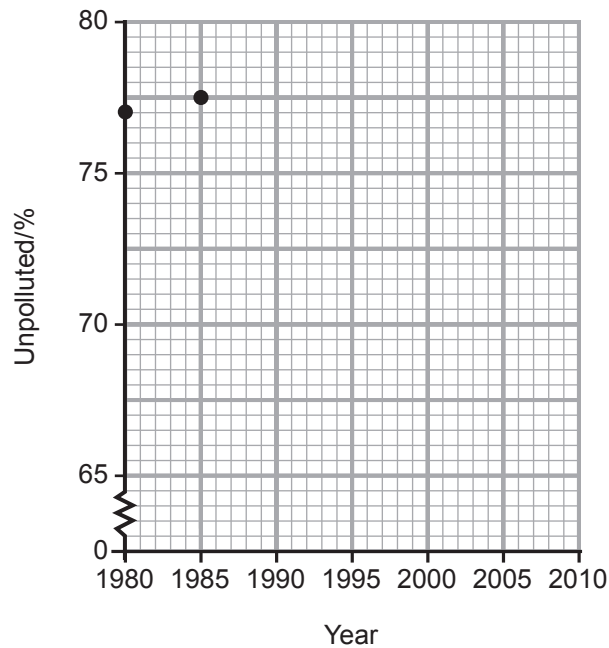
*Integrated Water Quality Report 2011 – South East Ireland – Appendices.
Published 2012. © Environmental Protection Agency*

(i) State the **overall** trend in the number of seriously polluted rivers.

[1]



- (ii) Complete the **line graph** below to show the results for the unpolluted samples.



[3]

- (iii) Scientists disagree about the effectiveness of the Nitrate Directive that was introduced in 1991. Using evidence from the table, give **one** argument that suggests the Nitrate Directive is effective and **one** argument that suggests the Nitrate Directive is not effective.

Effective: _____

Not effective: _____

[3]

[Turn over



9 (a) Cancer in humans is caused by mutations in cells.

(i) Explain fully what is meant by the term mutation.

[2]

(ii) Describe why excessive sun-bathing can cause skin cancer.

[2]

(b) Mutations can also give rise to new beneficial features that ensure an organism is better adapted to its environment. For example, succulent plants, such as a cactus, can absorb and store large quantities of water. This enables them to survive in very dry conditions when other plants would die.

(i) Use the theory of **natural selection** to explain the occurrence of large numbers of succulent plant species in very dry desert areas.

[3]

(ii) Over millions of years of natural selection species can change. Name the theory that describes changes in species over time and the scientist who developed this theory.

Theory: _____

Scientist: _____ [2]



10 Describe how DNA can code for protein, and explain why so many different proteins can be made and found in a cell.

In this question you will be assessed on your written communication skills including the use of specialist scientific terms.

[6]

THIS IS THE END OF THE QUESTION PAPER



DO NOT WRITE ON THIS PAGE

For Examiner's use only	
Question Number	Marks
1	
2	
3	
4	
5	
6	
7	
8	
9	
10	
Total Marks	

Examiner Number

Permission to reproduce all copyright material has been applied for.
In some cases, efforts to contact copyright holders may have been unsuccessful and CCEA will be happy to rectify any omissions of acknowledgement in future if notified.

